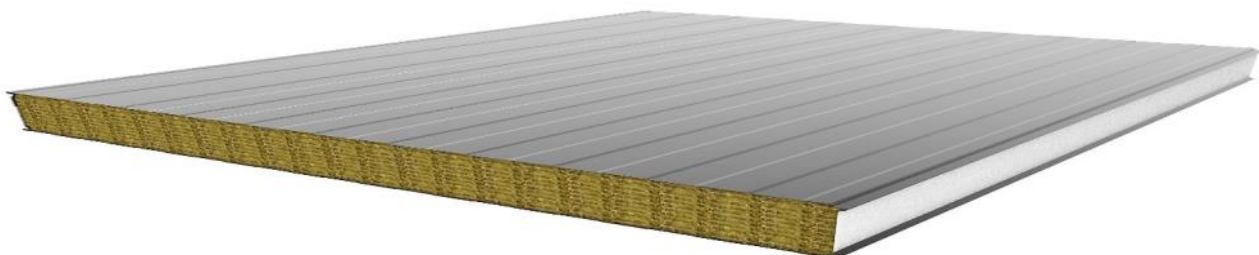


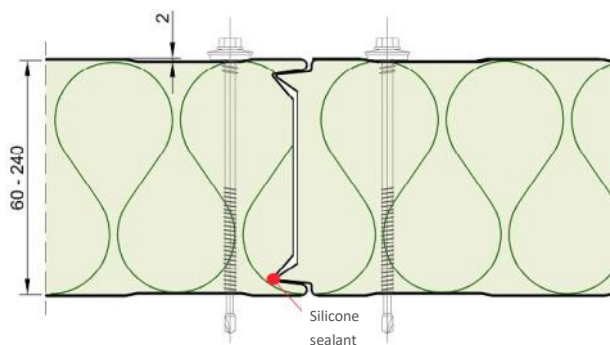
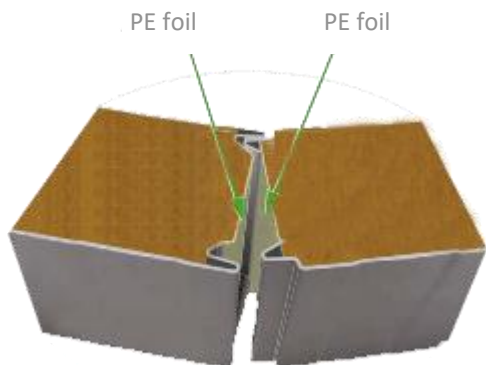
## MINERAL WOOL WALL/CEILING PANEL

*A tested and proven mineral wool panel—where fire protection is of utmost importance*



In general, mineral wool panels are good for applications where fire protection is an important parameter. The wall/ceiling panel is produced with a standard width of 1100 mm and can be used for walls as well as for ceilings. The panel can be fixed on to any substructure, for example wood, steel and concrete. The joints between two panels can be mounted perfectly without any thermal bridges giving a homogeneous and air tight surface. This system can also be used for complex building shapes and provides, based on the large distance between the columns, a very cost-effective construction method.

PE foil on the panel joints offers efficient protection against moisture during the installation period.



Panel type	Core thickness	U-value W/m <sup>2</sup> K Acc. EN 12667	U-value kg/m <sup>2</sup> W/m <sup>2</sup> K acc. EN 14509	Weight kg/m <sup>2</sup>	Fire resistance
WP-F 60	60	0,64	0,70	17,4	EI 30
WP-F 80	80	0,48	0,52	19,8	EI 60
WP-F 100	100	0,39	0,41	22,2	EI 90
WP-F 120	120	0,33	0,35	24,6	EI 120
WP-F 140	140	0,28	0,30	27,0	EI 120
WP-F 150	150	0,26	0,29	28,2	EI 180
WP-F 160	160	0,25	0,27	29,4	EI 180
WP-F 180	180	0,22	0,24	34,2	EI 180
WP-F 200	200	0,20	0,22	31,7	EI 180
WP-F 240	240	0,17	0,18	39,0	EI 180

The panels are produced with tongue and groove system, but it is always necessary to apply silicone sealant on the internal joint.

The panel is supplied with many different surface profiles and colors. For special requirements please contact DC-System.

For further specifications—see next page.



DC-System  
danish producer  
since 1973

**DC DC-SYSTEM**  
**S INSULATION A/S**

## TECHNICAL SPECIFICATION

### MINERAL WOOL WALL/CEILING PANEL



<b>Product tolerances</b>	According to EN 14509
<b>Standard product measurements</b>	Width: 1100 mm Length: Up to 15600 mm  Please note that long panels may buckle due to panel weight.
<b>Fire approval</b>	According to EN 13501-1, Euroclass A2-s1 d0, non-combustible.
<b>Sound insulation</b>	32 dB depending on frequency and thickness.
<b>Span dimensions</b>	Contact DC-System or visit <a href="http://www.dc-system.dk">www.dc-system.dk</a> .
<b>Core insulation material</b>	Mineral wool. Density approx. 120 kg/m <sup>3</sup> , 140 kg/m <sup>3</sup> on request.  Shear resistant bond with sheet steel covers.
<b>Surface cladding materials</b>	25 µ polyester coating with a PVS protection film (this film must be removed no later than 10 weeks from the production date). Galvanized steel plate with trapezoidal profile and 0.6 mm thickness.
<b>Joints</b>	The panels are produced with tongue and groove system.
<b>Color</b>	Standard colors white RAL 9010 or grey RAL 9002.
<b>Others</b>	Please contact DC-System for more information.  DC-System can assist you with engineering and on-site measuring.



**WWW.DC-SYSTEM.DK**  
**NORDVESTVEJ 8, DK-9600 AARS**

**Phone: +45 9862 4200**  
**info@dc-system.dk**