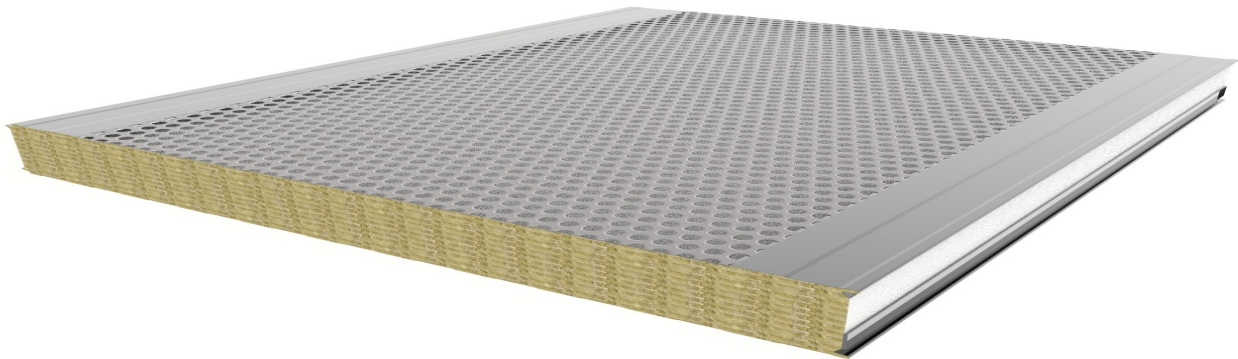


DC-System
danish producer
since 1973

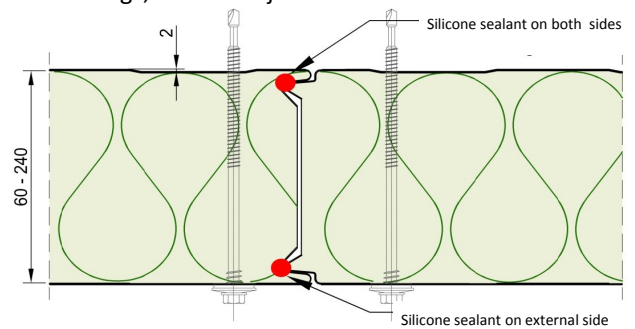
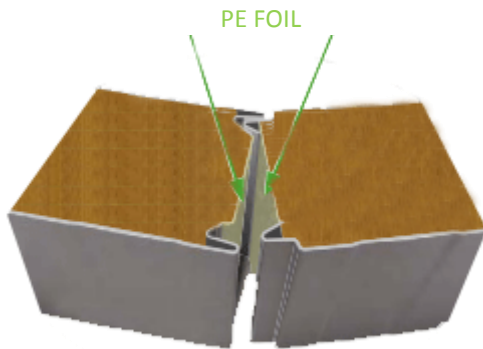
DC-DC-SYSTEM
INSULATION A/S

MINERAL WOOL ACOUSTIC PANEL

A tested and proven mineral wool panel for acoustic sound absorption



The mineral wool acoustic panel with perforated interior sheet provides a practical and clean solution for acoustic absorption. The panel is used for sound insulation of inside walls and suspended ceilings, and for adjustment of



Panel type	Core thickness	U-value W/m ² K EN 12667	U-value W/m ² K EN 14509	Weight kg/m ²	Sound insulation Rw dB	Sound absorption	Fire resistance
60	60	0,62	0,67	17,8	~32	0,85	EI 30
80	80	0,48	0,51	20,2	~32	0,85	EI 60
100	100	0,39	0,42	22,6	~32	0,85	EI 90
120	120	0,33	0,35	25,00	~32	0,85	EI 120
140	140	0,28	0,30	27,4	~32	0,85	EI 120
150	150	0,26	0,28	28,6	~32	0,85	EI 120
160	160	0,25	0,27	29,8	~32	0,85	EI 120
200	200	0,20	0,22	34,6	~32	0,85	EI 120
180	180	0,22	0,24	32,1	~32	0,85	EI 120
240	240	0,17	0,18	39,3	~32	0,85	EI 120

The panels are produced with tongue and groove system, but it is always necessary to apply silicone sealant on the internal and external joint.

For further specifications—see next page.



WWW.DC—SYSTEM.DK
NORDVESTVEJ 8, DK-9600 AARS

Phone: +45 9862 4200
info@dc-system.dk

DC-System
danish producer
since 1973

DC **DC-SYSTEM**
S **INSULATION A/S**

TECHNICAL SPECIFICATION

MINERAL WOOL ACOUSTIC PANEL



Product tolerances	According to EN14509
Standard product measurements	Width: 1100 mm Length: Up to 15000 mm
Fire approval	According to EN13501-1, Euroclass A2s1d0, non-combustible
Sound insulation	Approx. 32 dB depending on frequency and thickness. $\lambda_w = 0,85$, absorption class B
Span dimensions	Contact DC-System or visit www.dc-system.dk
Core insulation material	Mineral wool
Surface cladding materials	25 μ polyester coating with a PVS protection film (this film must be removed no later than 10 weeks from the production date) on the visible side. Galvanized steel plate with 0.6 mm thickness
Joints	The panels are produced with tongue and groove system
Color	Standard color on front is grey RAL 9002 and backside is white RAL 9010 or grey RAL 9002
Others	Please contact DC-System for more information. DC-System can assist you with engineering and on-site measuring



WWW.DC—SYSTEM.DK
NORDVESTVEJ 8, DK-9600 AARS

Phone: +45 9862 4200
info@dc-system.dk